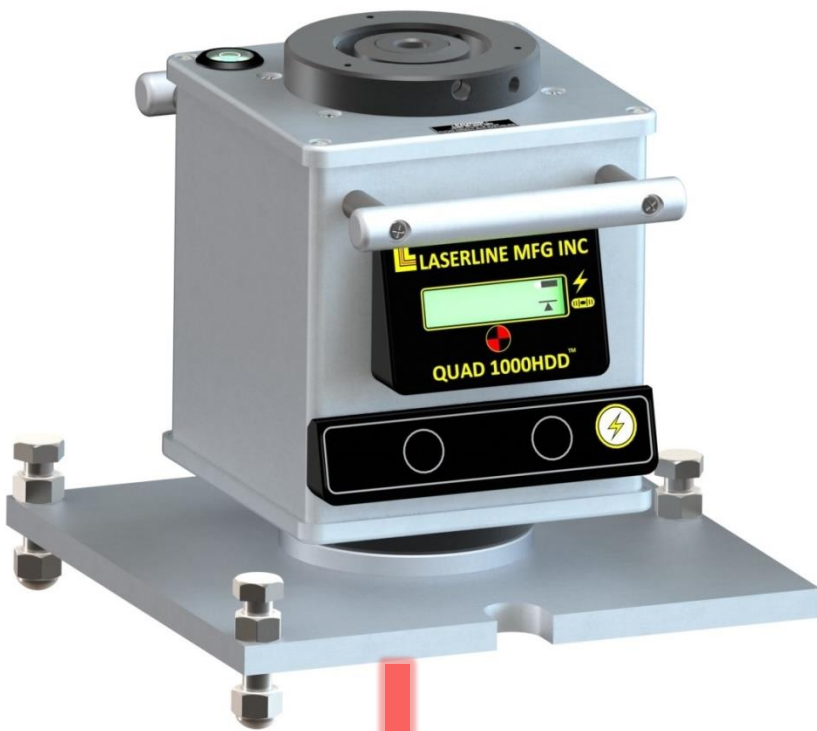


VERTICAL CONTROL LASERS

MINING & TUNNELING

SHAFT ALIGNMENT

QUAD 1000 HDD
(Downward Shooting Laser)



QUAD 1000 HDU
(Upward Shooting Laser w/ Laser Plummet)

L LASERLINE MFG, INC.

1810 SE First Street, Suite H, Redmond, OR 97756
Phone: 541-548-0882 • Fax: 541-548-0892 • Email: laserline@laserline.net
Website: www.laserlinemfg.com



“The long range solution for vertical shaft alignment”

The QUAD 1000 HDD provides a self-leveling downward shooting laser for plumb control while the QUAD 1000 HDU provides an upward (Zenith) self-leveling laser for vertical plumb control. Both models are built to withstand the harshest environments.

- ✓ **Accurate:** ± 5 arc seconds ($\pm 1/32$ inch per 100 feet) (.793mm per 30.48 meters)
- ✓ **Long Range:** Provides vertical plumb control to a range of 2,000 feet (609.6 meters)
- ✓ **Rugged:** Heavy duty $1/4$ inch thick aluminum housing with hard coat anodized finish
- ✓ **Dust and waterproof:** Purged and dry nitrogen filled with IP67 rating

QUAD 1000 HD SERIES FEATURES

5/8-11 Female thread for prism mount (HDD Model only)

Bulls-eye bubble



Carrying handle (x2)

Purge valve

Bright backlit LCD display panel featuring self-level and battery life status.

On/Off power button

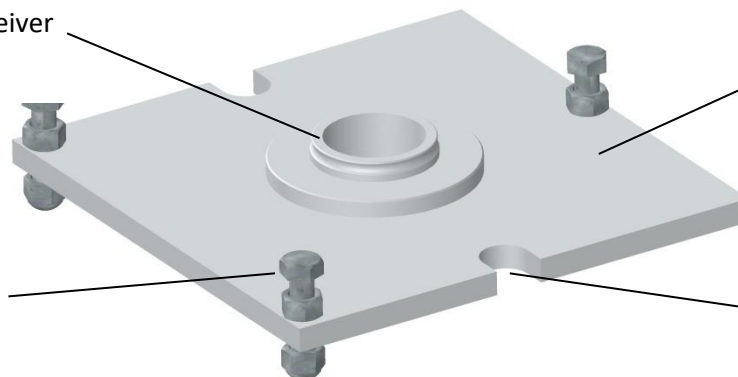
Military grade 3 pin, $1/4$ turn power connector



Rotational Quick Mount- Heavy duty hard anodized 360° rotational mount with spring loaded bearing tension for quick set up and easy calibration verification.

QUAD 1000 HDD Housing $1/4$ inch aluminum with clear hard coat anodized finish

Rotational Quick Mount Receiver



Trivet Mount- $1/2$ inch aluminum plate with clear hard coat anodized finish

Leveling screws with lock nuts (x3)

Tie down (anchor) slot

Laser Packages Include:

QUAD 1000 HDD Laser

Or

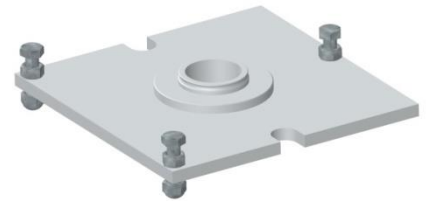
QUAD 1000 HDU Laser

Both models are heavy duty, high precision, waterproof, long range vertical plumb lasers with bright backlit LCD display panel.



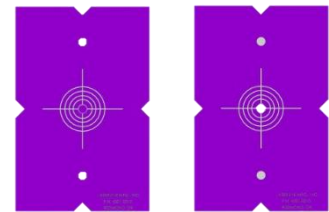
Mounting Trivet Plate P/N 4003-0002

3 point leveling base with quick disconnect rotational mount for QUAD 1000 HDD laser.



(2) Alignment Targets P/N 4001-0010

"Ultra-bright" bulls-eye for the most visible and precise readings at any distance. One of the two targets features a pass through hole allowing the laser to continue for multiple readings at one time. Special hard coating that protects the graphics on the target face and two ¼ inch holes for custom mounting. (5".75 L x 3".75 W)



Carrying Case P/N 3000-0182

Double wall blow molded, custom fit foam inserts and two locking latches for securing your items.



Power Cord, P/N 2020-0203

3 Pin Military grade connector with positive and negative alligator clips. Length=20 Ft. (6.096 Meters)



*OPTIONAL: P/N 1140-3

The 1140 Series Power Converter will run your laser at 13VDC with 90 to 260 VAC. The 1140 senses what voltage it is hooked up to and automatically runs the laser on that voltage.



QUAD 1000 HDD/ HDU LASER SPECIFICATIONS

Self-leveling: Electronic servo with variable temperature compensation

Plumb beam accuracy: ± 5 arc seconds ($\pm 1/32$ inch per 100 feet) (.793mm per 30.48 meters)

Range: 2,000 feet (609.6 meters)

Laser spot size: At Source = .500" (12.7mm)

***NOTE**—Atmospheric conditions can negatively affect range and spot size/quality.

Laser Power: 5.0 mw

USA EN/IEC 60824-1 2007 Class 3R

International IEC 60825-1 2014 Class 3R

USA OSHA compliant: Meets all Federal and International standards

Power source: 12 VDC or 110-220 VAC with optional 1140 power converter

Operating temperature: 0 to + 122 degrees F (-18 to +50 c)

Storage temperature: -4 to +158 F (-20 to +70c)

Dimensions:

Height: 8" (20.32cm)

Width: 6" $\frac{1}{2}$ x 6" $\frac{1}{2}$ (16.50x16.50cm) at bottom

Width Handles Side: 9" $\frac{3}{4}$ (23.6cm)

Weight: 10.5 lbs. (4.77 kgs)

Dust and waterproof: Purged and dry nitrogen filled with IP67 rating
(Heavy duty $\frac{1}{4}$ inch thick aluminum housing with hard coat anodized finish)

Warranty: 24 months parts and labor for defective workmanship and material.



LaserLine Mfg., Inc.

1810 SE First Street Ste. H
Redmond, OR 97756

Phone: 541-548-0882

Fax: 541-548-0892

Web: www.laserlinemfg.com

Email: laserline@laserline.net



Your Dealer: