

RL-H5A



Standard Kit



RL-H5A + LS80L D Cell Battery Package

- RL-H5A Unit
- Battery Holder DB-79A
- D Cell Battery X 4
- Level Sensor LS-80L
- Level Sensor Holder Type 6
- AA Battery X 2
- Carrying Case
- User Manual
- Safety Notice / Standard Kit List



RL-H5A + LS80L Rechargeable Battery Package

- RL-H5A Unit
- Battery Pack BT-79Q (Ni-MH)
- Battery Holder DB-79A
- AC/DC Converter AD-17C
- Level Sensor LS-80L
- Level Sensor Holder Type 6
- AA Battery X 2
- Carrying Case
- User Manual
- Safety Notice / Standard Kit List

SPECIFICATIONS

RL-H5A

Operating range	Diameter Approx. 2 to 800 m (When using LS-80L)	
Accuracy	±10"	
Self-leveling range:	±5°	
Manual slope settable range	±5° (When the instrument is installed on the 0° surface)	
Laser source:	Laser diode (Visible, 635 nm) CDRH (FDA) Class IIIa, IEC Class 3R	
Rotational speeds	600 r.p.m	
Status alerts	HI and low battery	
Dust and water resistance	IP66 (IEC60529: 2001)	
Operating temperature	-20 to 50°C (-4 to 122°F)	
Size	104(W) x 127(D) x 37(H) mm	
Weight	Dry battery type	2.3 kg (5.1 lbs) (with dry cell batteries)
	Rechargeable battery type	2.5 kg (5.5 lbs) (with BT-79Q)
Power source/Operating time at 20°C (68°F)	4x D size dry cell batteries (alkaline) /100 hours Ni-MH battery pack BT-79Q (7000mAh) /60 hours	

LS-80L

On-Grade Precision	High	±1mm (±0.04in.)
	Normal	±2mm (±0.08in.)
Grade Information Channel	9 Channels (plus high/low out of range)	
Beam Detection Width	50mm (2.0in.)	
Display	LCD on each side	
Buzzer	Loud/Low/OFF	
Icons for RL-H4C Warnings	HI Alert, Low Battery	
Battery Level Indicator	LCD Icon	
Auto Shut-off	Approx. 30 minutes	
Dust and Water Protection	IP66 (IEC 60529)	
Operating Temperature	-20°C to +50°C (-4°F to +122°F)	
Dimension	146(L) x 76(W) x 26(H)mm (5.7(L) x 3.0(W) x 1.0(H)in.)	
Weight	190g (6.7oz.) including two AA/LR6 batteries	
Battery	Two AA/LR6 dry-cell batteries	
Operating Time at 20°C (68°F)	Approx. 120 hrs w/alkaline	

- Specifications may vary by region and are subject to change without notice.
- Other trademarks and trade names are those of their respective owners.

Your local Authorized Dealer is:



TOPCON CORPORATION

75-1 Hasunuma-cho, Itabashi-ku, Tokyo 174-8580, Japan
www.topcon.co.jp

<Contact to>

Topcon Singapore Positioning Sales Pte Ltd
1 Jalan Kilang Timor,
#09-01 Pacific Tech Centre, Singapore 159303
Phone: (+65)6778-3456 Fax: (+65)6773-6550
Email: svy.regional@topcon.com.sg
Web: www.topcon.com.sg

©2017 Topcon Corporation All rights reserved. P-253-1 TSP

RL-H5A



RL-H5A

Rotating Laser



Smart & Tough! All Round Construction Laser

- + 10 Arc second (1.5mm@30m) horizontal accuracy
- Long range operation 800m
- Sloping set
- Safety lock and tough IP66 construction rating
- High quality TOPCON laser
- User friendly design

Reliable partner with 3 "Highs"!

RL-H5A

High accuracy

High reliability

High quality

User Friendly Design

Big handle, easy to grab even with glove on.
Clear operational button, easy to understand what to do.
New design to care for the user's operation.



High Accuracy for large area

From pile foundation to construction

+ 10 Arc second (1.5mm@30m) high horizontal accuracy. Large range operation 800m.
All round construction laser for pile foundation for buildings, leveling work for large construction site or farmland.



Reliable leveling work at construction site



Reliable even at the vibrated environment

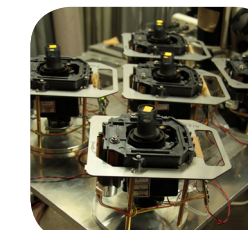
Electronic self-leveling mechanism inside makes stable laser beam even at vibrated environment where pendulum cannot perform well. Also, safety lock (high alert) function let the operator know in the case that the unit get slanted and its height changes. You can rely on it to use.

High Quality Topcon Laser

Topcon believes the product on site must have reliability from the customer. Therefore, the tough environmental test, simulated as tough construction site, is performed for RL-H5A.



High/Low Temperature Test



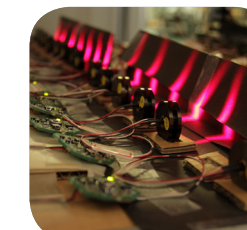
Repeatability Accuracy Test



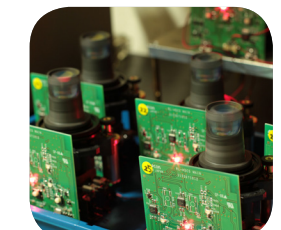
Vibration Test



Drop Test



Laser Endurance Test



Rotating Head Endurance Test



Water gradient, a piece of cake!

RL-H5A can do leveling as well as sloping in single axis.
Just using two buttons of the unit to set the laser on the level sensor.
Easy to use on the site!



Tough IP66 Construction Rating

With the IP66 rating, RL-H5A is "Construction Site Tough" and can withstand dust, a sudden shower and even torrential rainfall.

Level Sensor

Level sensor LS-80L

Standard level sensor. Arrow display with buzzer shows the difference. Displays Topcon laser status alerts (HI and low battery).



LS-80L Display

On-grade precision: $\pm 1\text{mm}$ or $\pm 2\text{mm}$

9-channel grade indication (5mm width per channel)

Warning for RL-H5A laser

HI Alert

Low battery

Battery level of LS-80L

